



Bezpečnostné pokyny

- △ Pri montáži musíte nosiť rukavice, aby ste predišli pomliaždeninám a rezným poraneniam.
- △ Produkt sa smie používať len na kúpanie a telesnú hygienu.
- △ Veľké rozdiely v tlaku medzi prípojkami studenej a teplej vody musia byť vyrovnané.

Pokyny pre montáž

- Pred montážou musíte produkt skontrolovať, či nebol počas transportu poškodený. Po zabudovaní nebudú uznané žiadne škody spôsobené transportom alebo poškodenia povrchu.
- Potrubia a vybavenie musia byť namontované, prepláchnuté a vybavené v platnom normami.
- Je potrebné dodržiavať smernice o inštalácii, ktoré sú práve teraz platné v krajinách.
- Prestavovač (typ HC) použitý vo vaňovom zmiešavači je vyhotovený ako zariadenie na zaistenie proti spätnému nasávaniu. Preto sa musí spodná hrana prestavovača nachádzať min. 25 mm nad najvyššiu možnou hladinou znečistenej vody.

Technické údaje

| | |
|------------------------------|----------------------------|
| Prevádzkový tlak: | max. 1 MPa |
| Doporučený prevádzkový tlak: | 0,1 - 0,5 MPa |
| Skúšobný tlak: | 1,6 MPa |
| | (1 MPa = 10 bar = 147 PSI) |
| Teplota teplej vody: | max. 60 °C |
| Termická dezinfekcia: | 70 °C / 4 min |

- Vlastná poisťka proti spätnému nasatiu.
- Výrobok je koncipovaný výhradne pre pitnú vodu!

Popis symbolov



Nepoužívať silikón s obsahom kyseliny octovej!



Nastavenie (viď strana 37)

Nastavenie obmedzenia teplej vody. V spojení s prietokovými ohrievačmi sa neodporúča použitie obmedzovača teplej vody.



Údržba (viď strana 45)

Pri spätných ventiloch sa musí podľa EN 806-5 v súlade s národnými alebo regionálnymi predpismi testovať ich funkčnosť (aspoň raz ročne).



Rožmery (viď strana 38)



Diagram prietoku (viď strana 40)



Servisné diely (viď strana 41)

XXX = Farebné označenie

000 = Chróm

670 = Matt Black



Čistenie (viď strana 45)



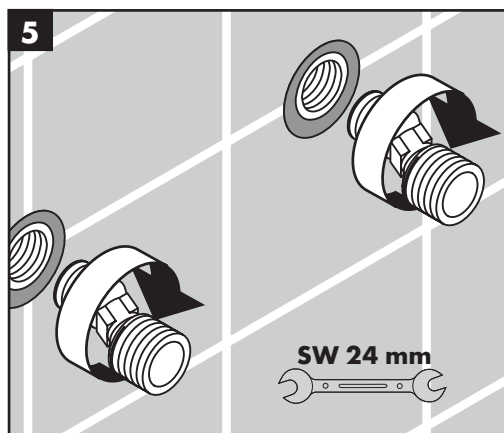
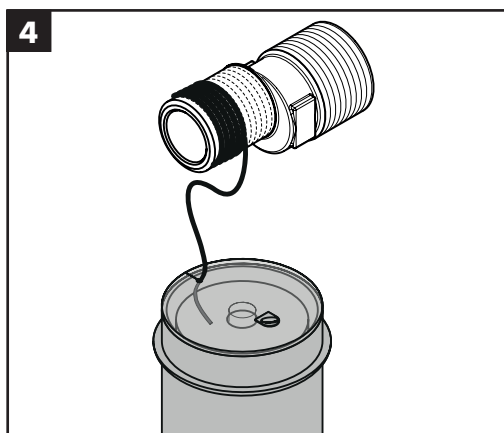
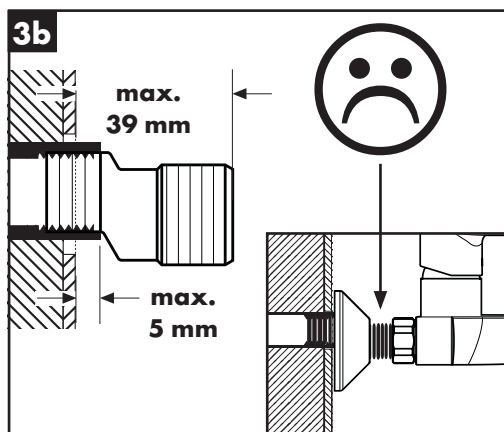
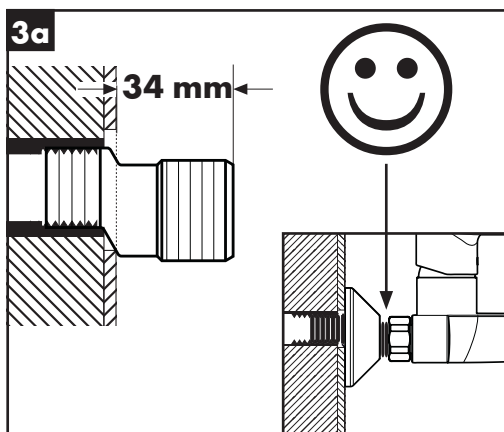
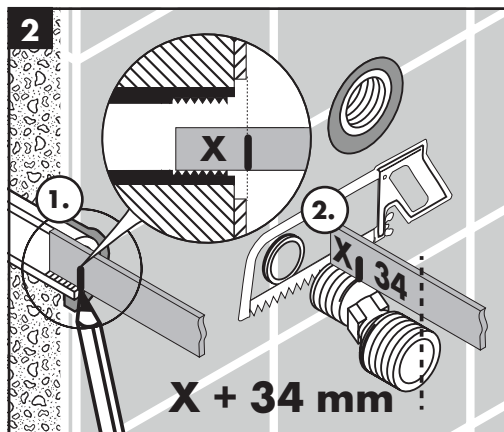
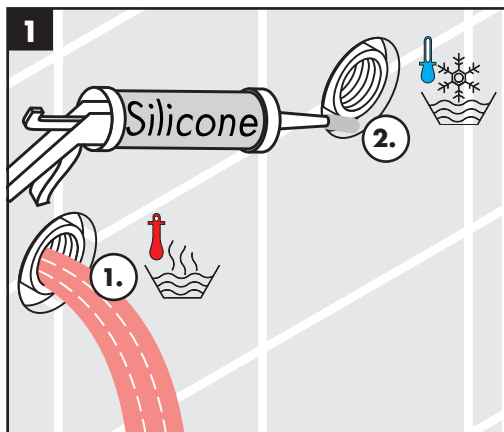
Obsluha (viď strana 44)

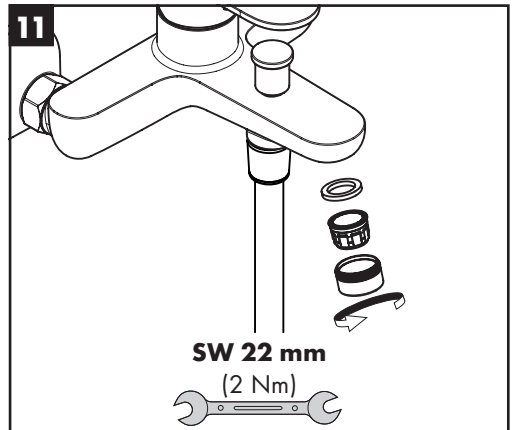
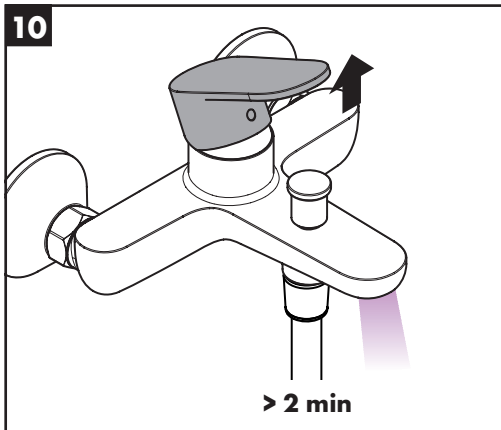
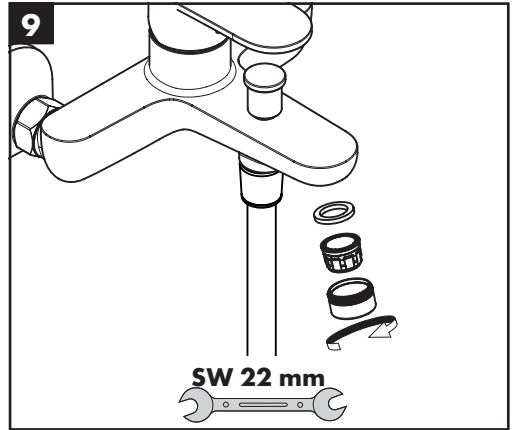
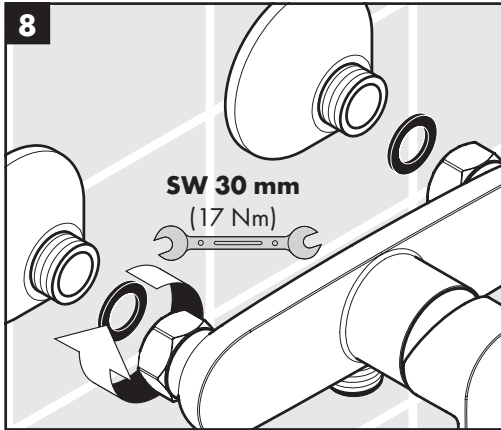
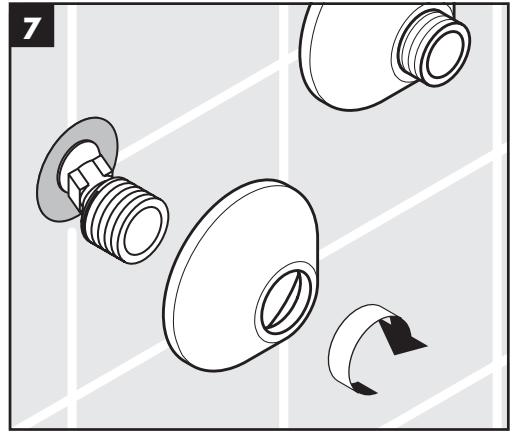
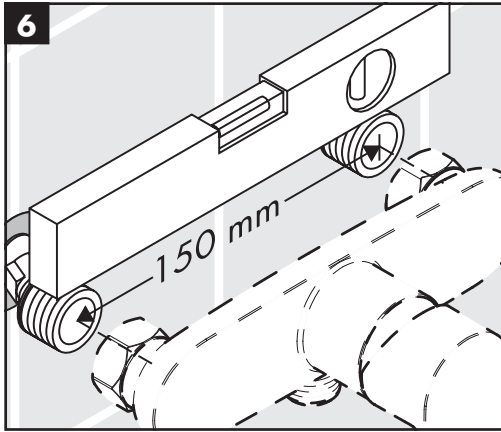


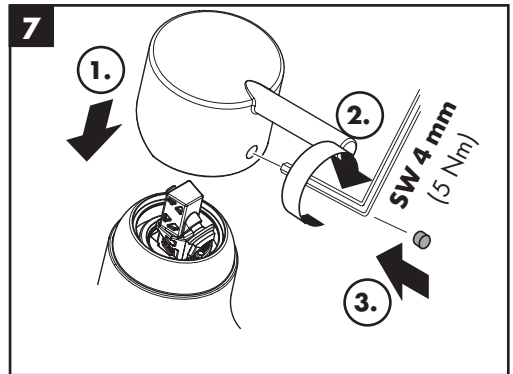
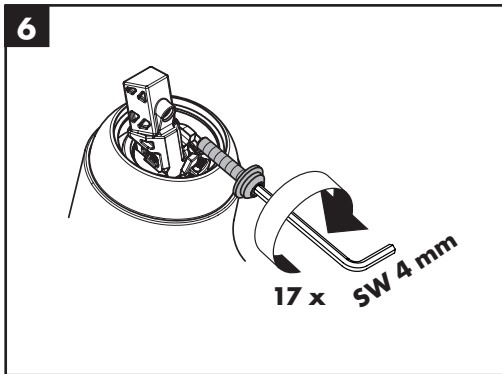
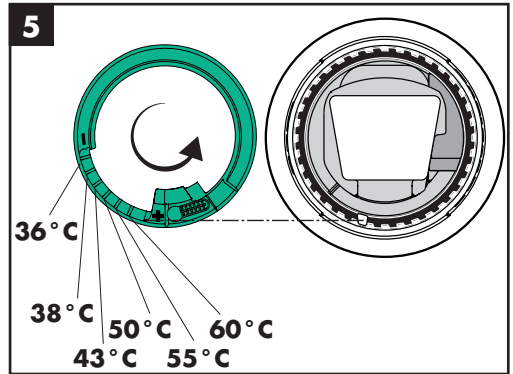
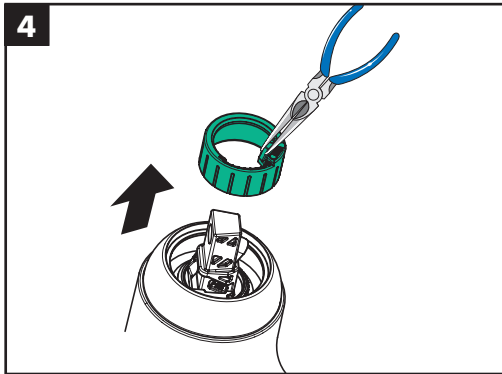
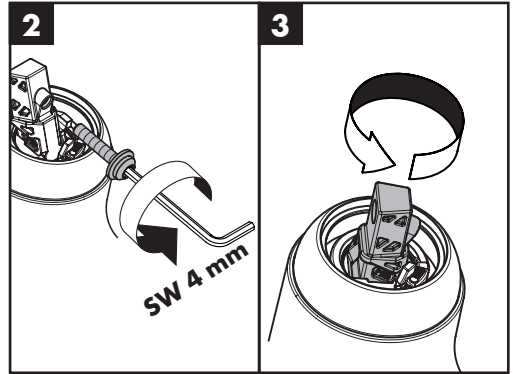
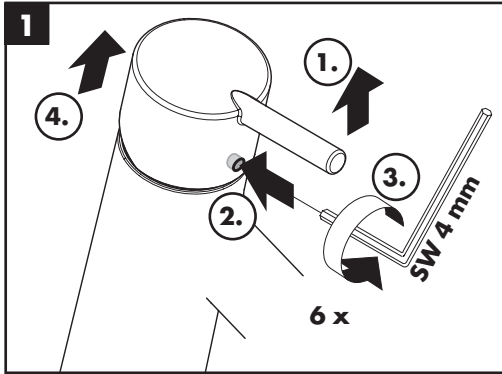
Osvedčenie o skúške (viď strana 48)

| Porucha | Príčina | Pomoc |
|------------------------------|--|--|
| Málo vody | - Perlátor zanesený vodným kameňom | - Vycistiť alebo vymeniť perlátor |
| Armatúra "chodí" ťažko | - Kartuša je poškodená, vápenaté usadeniny | - Vymeniť kartušu |
| Z armatúry kvapká voda | - Kartuša je poškodená | - Vymeniť kartušu |
| Prietokový ohrievač nezapína | - Sítko v tesnení sprchy je znečistené - Obmedzovač spätného nasatia je zablokovaný | - Vycistiť sítká lapačov nečistôt - Vymeniť obmedzovač spätného nasatia |
| Nízka teplota teplej vody | - Nie je odstránený krúžok zo sprchy - Nesprávne nastavená zarážka na | - Odstrániť krúžok zo sprchy - Nastavenie zarážky na teplú vodu |





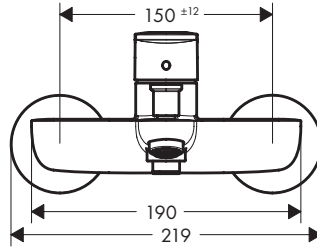
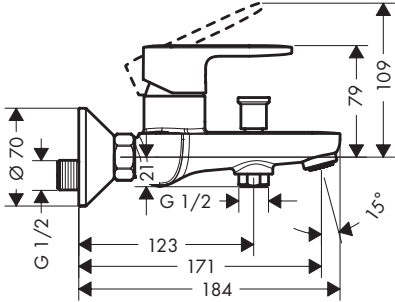






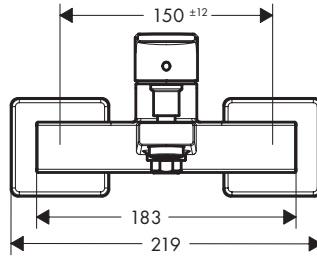
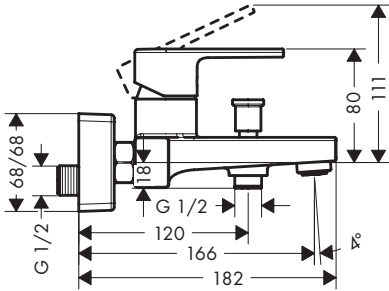
Vernis Blend

71440XXX / 71447000



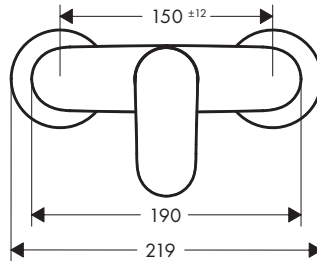
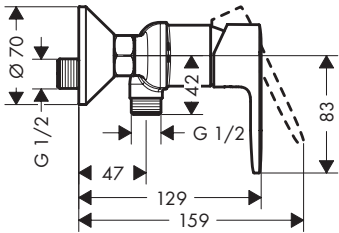
Vernis Shape

71450XXX / 71457000



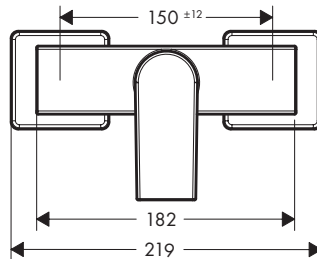
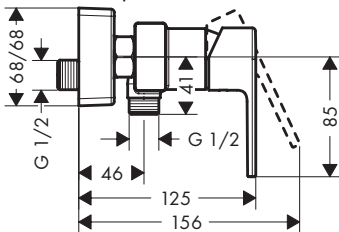
Vernis Blend

71640XXX / 71647000



Vernis Shape

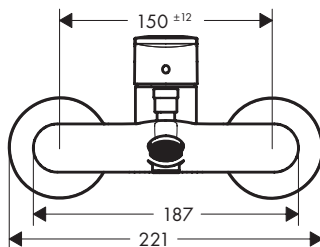
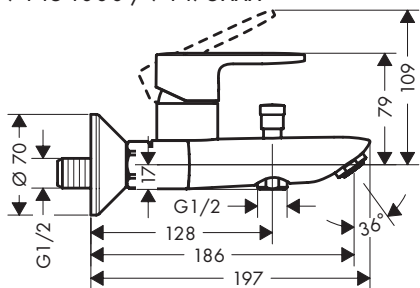
71650XXX / 71657000





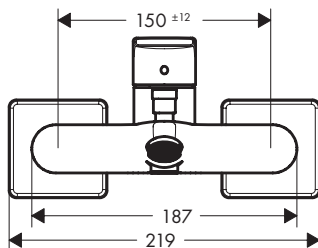
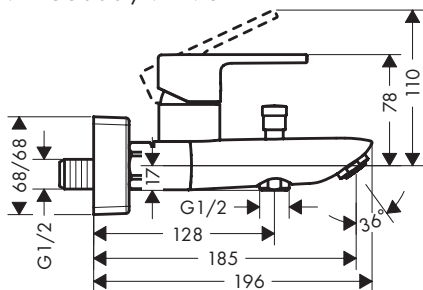
Vernis Blend

71454000 / 71475XXX



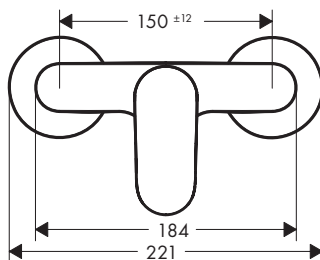
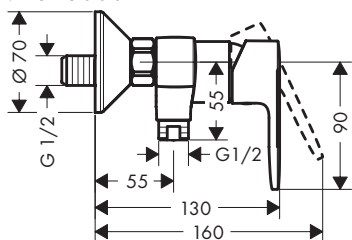
Vernis Shape

71453000 / 71476XXX



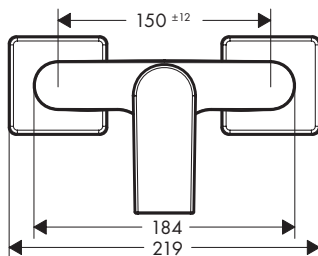
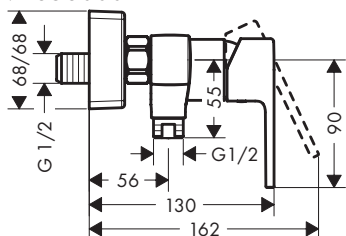
Vernis Blend

71646000



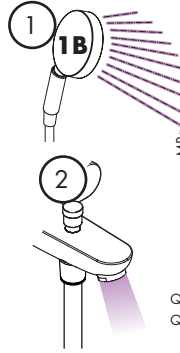
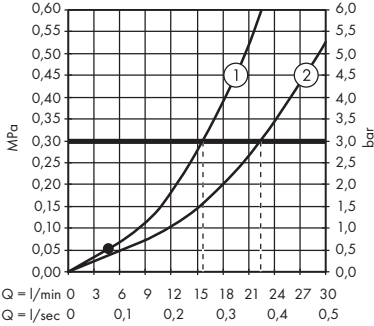
Vernis Shape

71656000

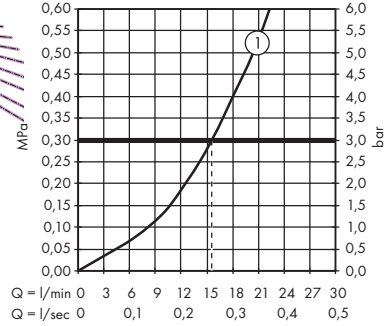




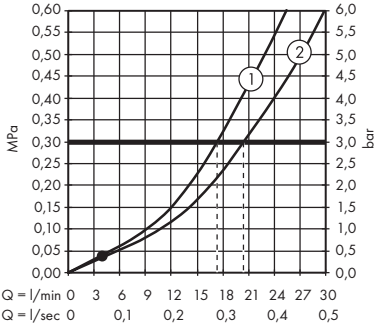
Vernis Blend 71440XXX / 71447000
Vernis Shape 71450XXX / 71457000



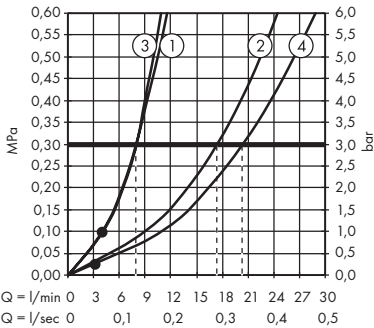
Vernis Blend 71640XXX / 71647000
Vernis Shape 71650XXX / 71657000



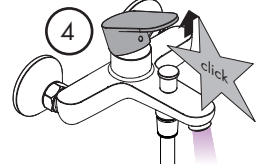
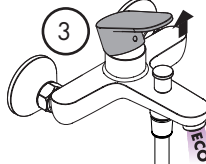
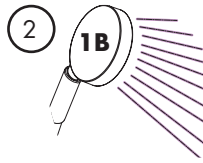
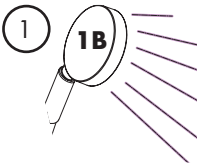
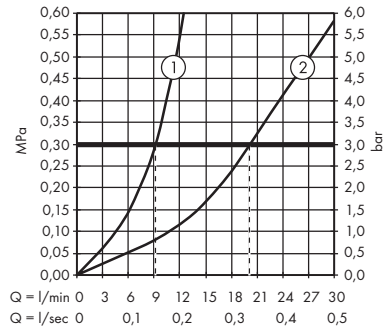
Vernis Blend 71475XXX
Vernis Shape 71476XXX



Vernis Blend 71454000
Vernis Shape 71453000

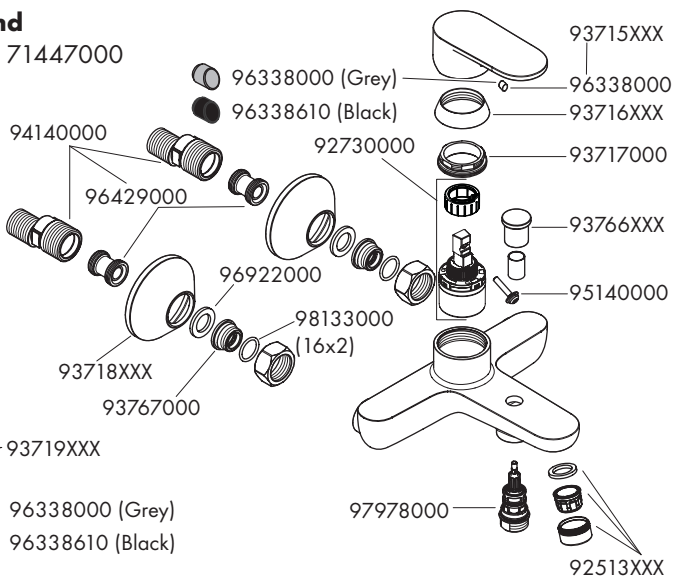


Vernis Blend 71646000
Vernis Shape 71656000

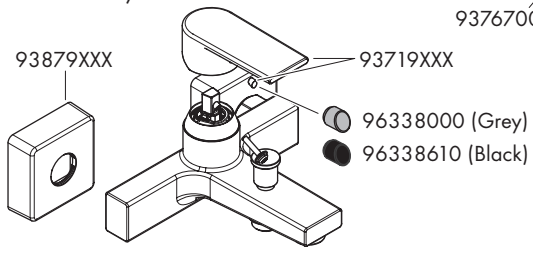




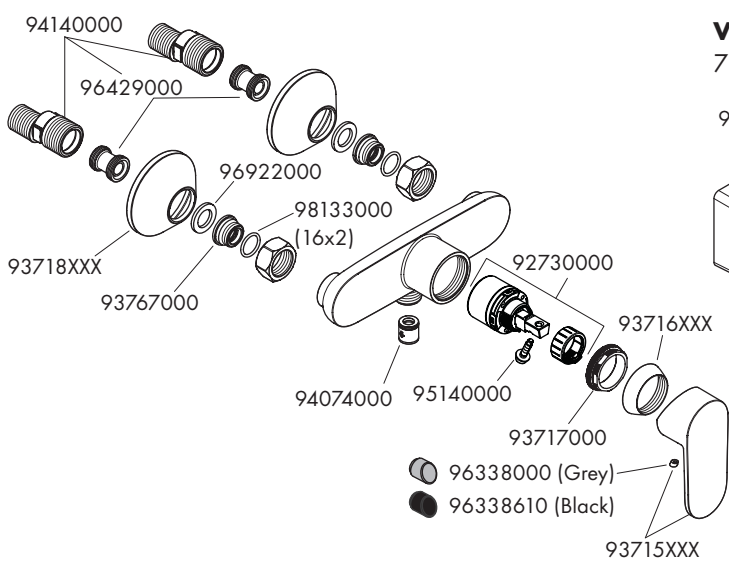
Vernis Blend
71440XXX / 71447000



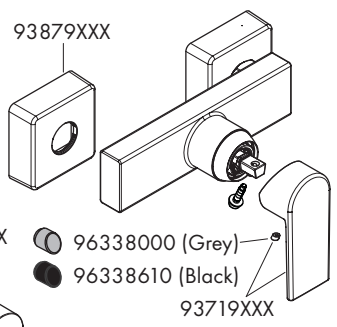
Vernis Shape
71450XXX / 71457000



Vernis Blend
71640XXX / 71647000

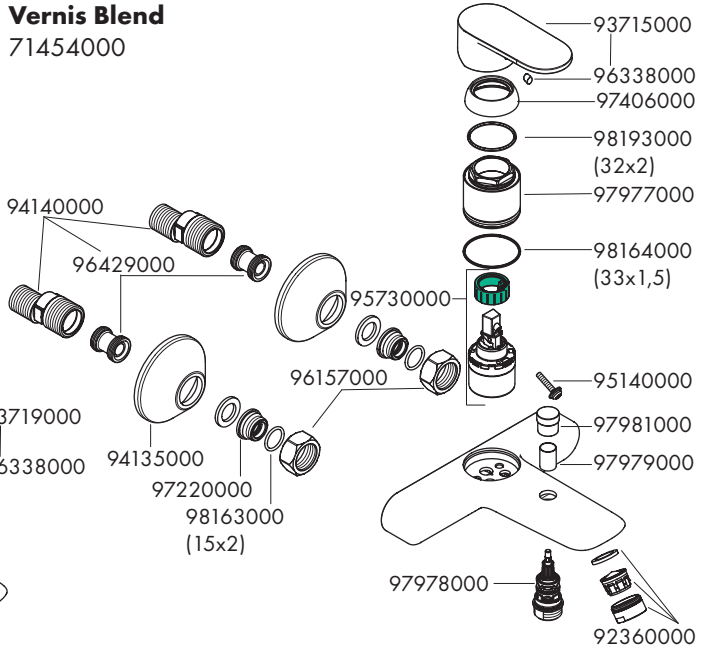


Vernis Shape
71650XXX / 71657000

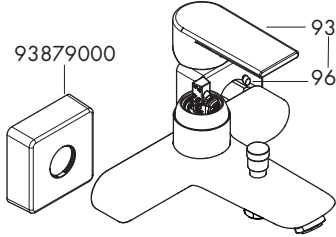




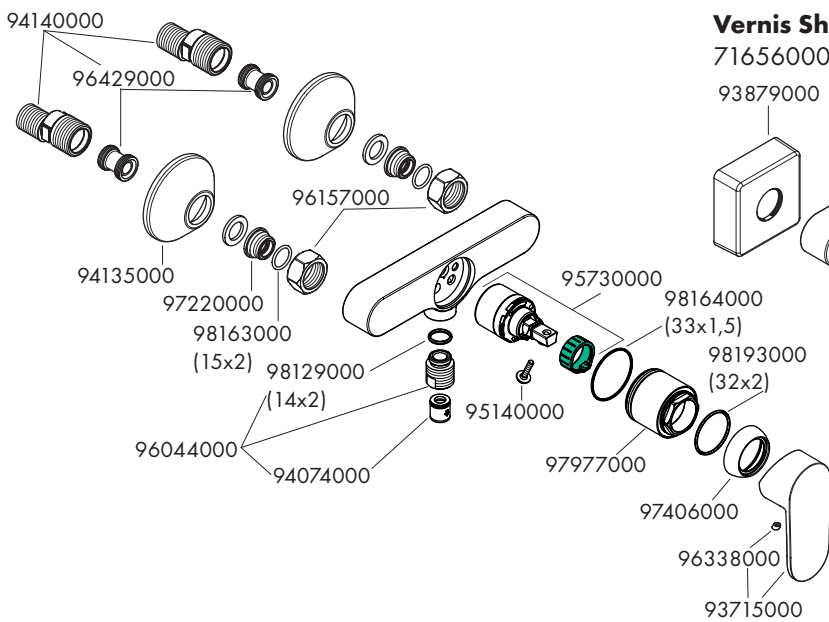
Vernis Blend
71454000



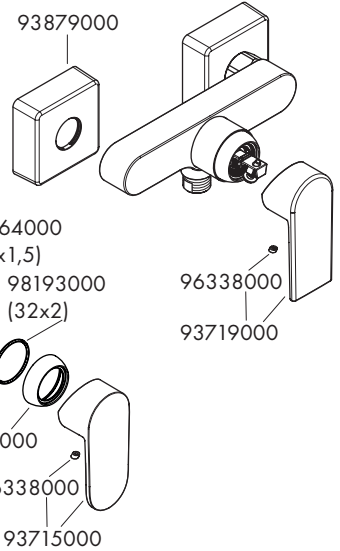
Vernis Shape
71453000



Vernis Blend
71646000



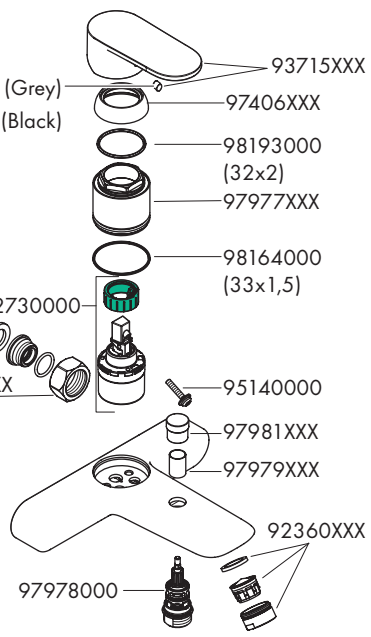
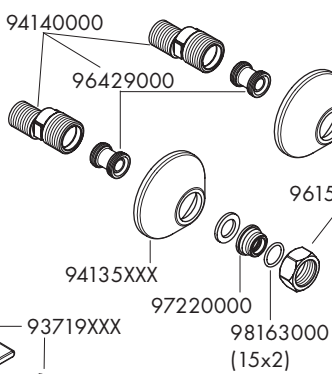
Vernis Shape
71656000



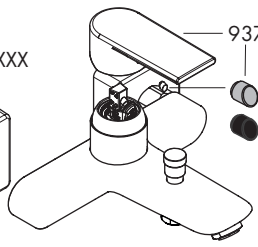
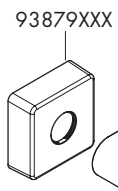


Vernis Blend
71475XXX

- 96338000 (Grey)
- 96338610 (Black)



Vernis Shape
71476XXX

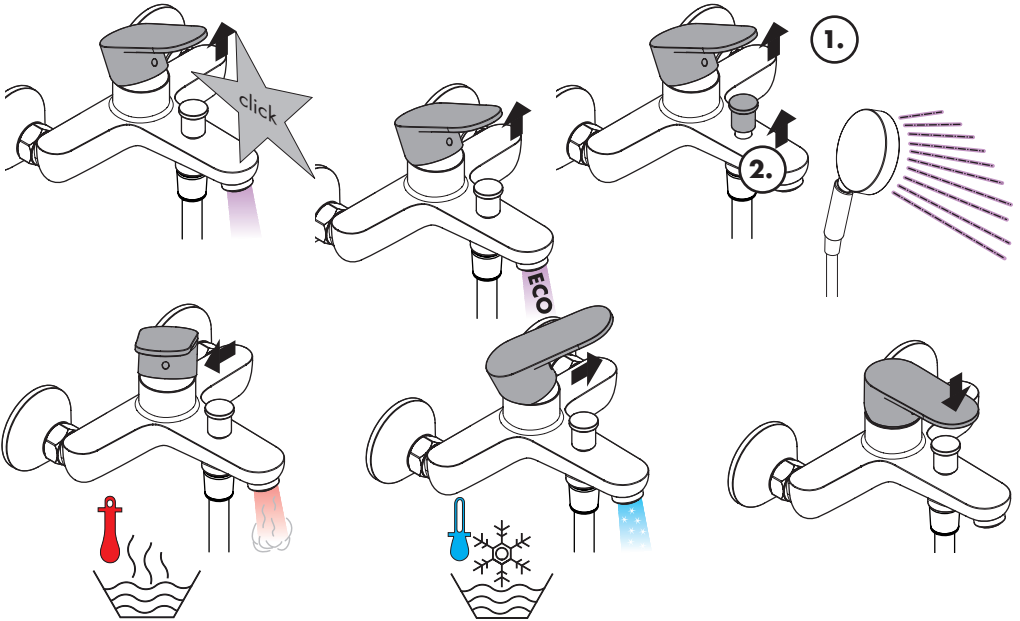


- 96338000 (Grey)
- 96338610 (Black)



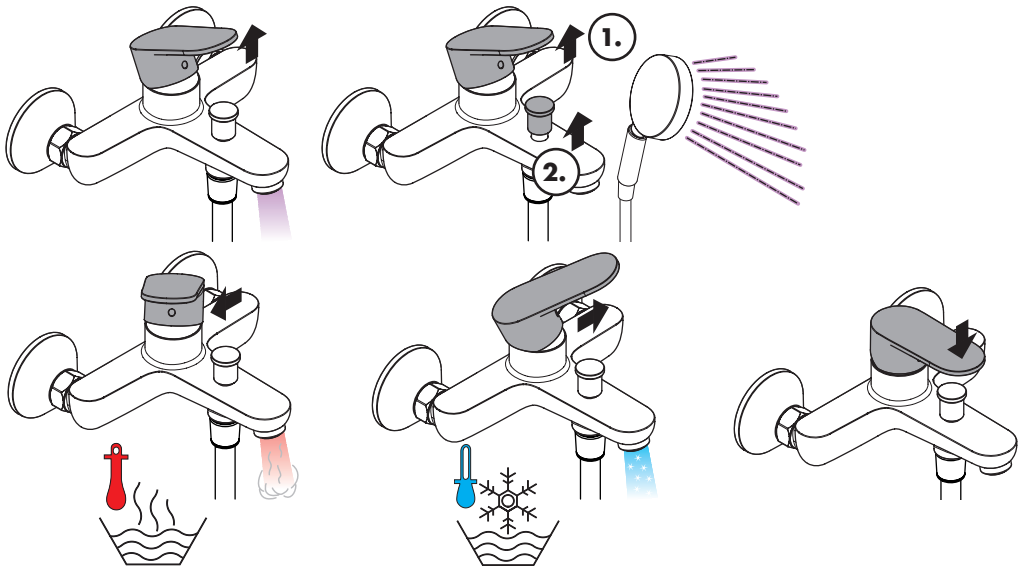
Vernis Blend 71454000 / 71646000

Vernis Shape 71453000 / 71656000



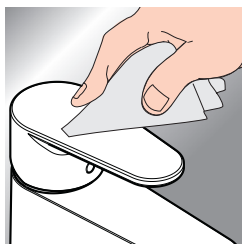
Vernis Blend 71440XXX / 71447000 / 71475XXX / 71640XXX / 716470000

Vernis Shape 71450000 / 71457000 / 71476XXX / 71650XXX / 71657000



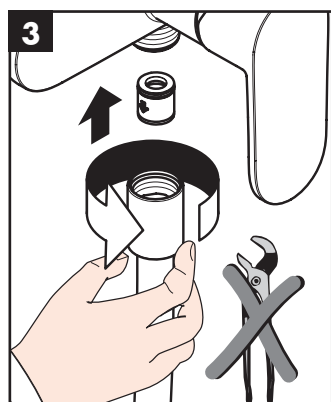
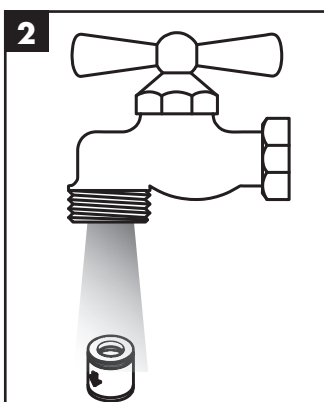
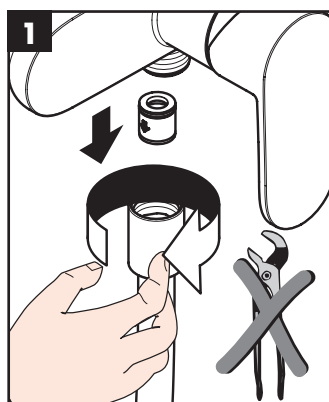


www.hansgrohe.com/cleaning-recommendation



- DE** Reinigungsempfehlung / Garantie / Kontakt
- FR** Recommandation pour le nettoyage / Garanties / Contact
- EN** Cleaning recommendation / Warranty / Contact
- IT** Raccomandazione di pulizia / Garanzia / Contatto
- ES** Recomendaciones para la limpieza / Garantía / Contacto
- NL** Aanbevelingen inzake reiniging / Garantie / Contact
- DK** Rengøringsvejledning / Garanti / Kontakt
- PT** Recomendações de limpeza / Garantia / Contacto
- PL** Zalecenie dotyczące pielęgnacji / Gwarancja / Kontakt
- CS** Doporučení k čištění / Záruka / Kontakt
- SK** Odporúčania pre čistenie / Záruka / Kontakt
- ZH** 清洁指南 / 担保 / 接触
- RU** Рекомендации по очистке / Гарантия / Контакты
- FI** Puhdistussuositus / Takuu / Kosketus

- SV** Rengöringsrekommendationer / Garanti / Contacto
- LT** Valymo rekomendacijos / Garantija / Kontaktai
- HR** Preporuke za čišćenje / Garancija / Kontakt
- RO** Recomandări pentru curățare / Garanție / Contact
- EL** Σύσταση καθαρισμού / Εγγύηση / επαφή
- SL** Priporočila za čiščenje / Garancija / Kontakt
- ET** Puhastussoovitused / Garantii / Kontakt
- LV** Tīrīšanas ieteikumi / Garantija / Kontakti
- SR** Preporuke za čišćenje / Garancija / Kontakt
- NO** Anbefaling for rengjøring / Garanti / Kontakt
- BG** Препоръка за почистване / Гаранция / Контакт
- JP** お手入れの方法 / 保証について / ご連絡先
- UA** Рекомендації з чищення / Гарантія / контакт
- AR** توصيات التنظيف / الضمان / اتصال
- TR** Temizleme önerisi / Garanti / Temas
- HU** Tisztítási tanácsok / Garancia / érintkezés
- HE** המלצות לניקוי / אחריות / איש קשר









P-IX

VDGW

SINTEF NF



ETA



GODKENDT TIL DRİKKEVAND

| | | | | | |
|-----------------|------------------|--------|--|---|---|
| 71440XXX | PA-IX 38135/IIDB | DM0443 | | | X |
| 71447000 | PA-IX 38135/IIDB | | | | X |
| 71450XXX | PA-IX 38137/IIDB | DM0446 | | | X |
| 71453000 | | | | X | |
| 71454000 | | | | X | |
| 71457000 | PA-IX 38137/IIDB | | | | X |
| 71475XXX | PA-IX 28116/ICB | | | X | X |
| 71476XXX | PA-IX 28116/ICB | | | X | X |
| 71640XXX | PA-IX 38131/IA | DM0443 | | | X |
| 71646000 | | | | X | |
| 71647000 | PA-IX 38131/IA | | | | X |
| 71650XXX | PA-IX 38132/IA | DM0446 | | | X |
| 71656000 | | | | X | |
| 71657000 | PA-IX 38132/IA | | | | X |

Vernis Blend

71440XXX
71447000



Vernis Shape

71450XXX
71457000



Vernis Blend

71640XXX
71647000



Vernis Shape

71650XXX
71657000



Vernis Blend

71475XXX
71476XXX

