

AXOR Citterio M

2-hole single lever kitchen mixer 240 with swivel spout

Finish: **Chrome** Article Number: **34820000**



product features

- ComfortZone 240
- swivel range adjustable in 3 steps 110°, 150° or 360°
- normal spray
- quick connect hose
- connection dimension: DN15
- maximum flow rate at 3 bar: 11 l/min
- ceramic cartridge
- connection type: G 3/8 connections
- temperature limitation adjustable
- integrated non-return valve
- suitable for continuous flow water heaters

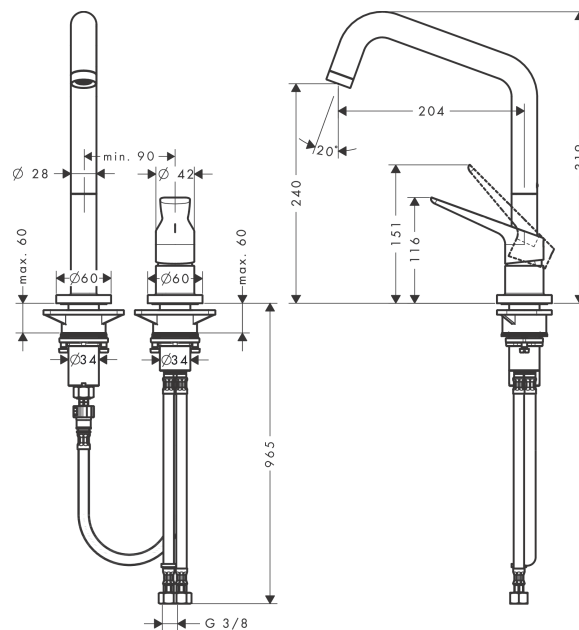
Technology



Product image



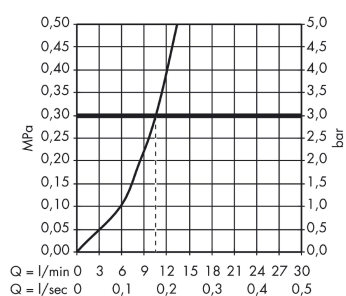
Scale drawing



AXOR Citterio M
2-hole single lever kitchen mixer 240 with swivel spout
 Finish: **Chrome** Article Number: **34820000**



Flowchart

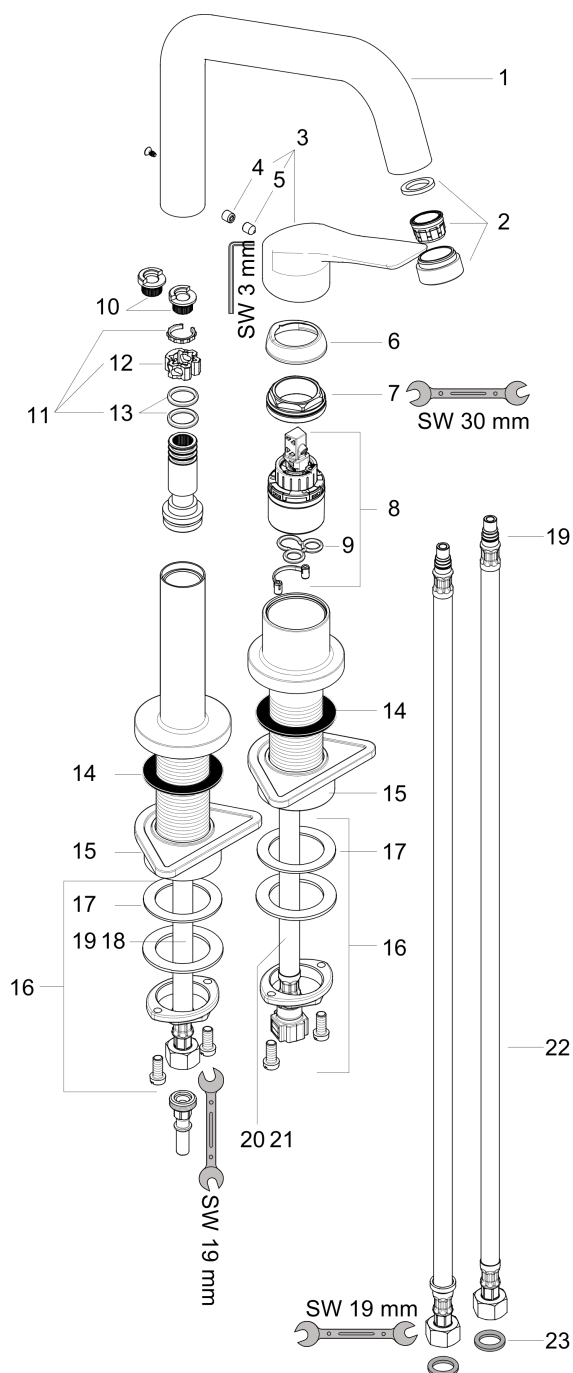


AXOR Citterio M
2-hole single lever kitchen mixer 240 with swivel spout
 Finish: **Chrome** Article Number: **34820000**



Exploded Drawing

Year of production: >11/11



AXOR Citterio M
2-hole single lever kitchen mixer 240 with swivel spout
 Finish: **Chrome** Article Number: **34820000**



Spare part list

Year of production: >11/11

Pos.		Article Number	PC	PU
1	spout cpl.	98604000	16	1
2	aerator M24x1 (15 l/min)	97691000	10	1
3	handle	95902000	16	1
4	screw cover	96762000	1	1
5	hollow set screw M6x8	98444000	1	1
6	flange	96763000	3	1
7	nut	97209000	5	1
8	cartridge, assy	92730000	11	1
9	seal	95008000	3	1
10	set of locating rings (110° / 150°)	98486000	5	1
11	sealing set	92646000	6	1
12	axialring	97558000	1	1
13	O-Ring 14x2,5	98189000	1	1
14	sealing washer	97825000	1	1
15	support	97523000	2	1
16	fixing set (Ø 34)	95049000	5	1
17	lever collar	97548000	1	1
18	connection hose 600 mm M10x1 G3/8	97398000	8	1
19	O-ring 8x1,75	97827000	1	1
20	connection hose 600 mm M10x1	95561000	7	1
21	O-ring 7x1,5	98422000	1	1
22	connection hose 900 mm M8x0,75 G3/8	98758000	8	1
23	sealing set	95581000	2	1
a	set of locating rings (60° / 80°)	92259000	6	1