

**TECElux toilet module 100, installation height 1120 mm**

Article number: 9600100

DU 1: 1 pc.

DU 2: 6 pc.

DU 3: 12 pc.

Description:

Dry-wall construction element for fitting to TECEprofil section tubes or for installation in metal or wooden stud walls and as a pre-wall or corner module.

For TECElux glass facing with actuation unit.

TECE flush-mounted cistern:

- Safety tank made of impact-resistant plastic, tested according to EN 14055
- Cistern fully pre-assembled and sealed
- Corner valve and cistern connection pre-assembled
- Cistern connection with external thread R 1/2" on the side, compatible with quick adapters
- 10-litre tank volume; 6-litre pre-set standard flush volume, 9, 7.5, 4.5 litre flush volume can be optimally set at any time; 3-litre partial-flush volume for dual-flush system. Residual volume usable for immediate flush cleaning.
- Insulated against condensation water
- Low-noise hydraulic filling valve, acoustic group 1 according to DIN 4109
- Including insert chute for cleaning tablets. Enables the insertion of cleaning tablets into the cistern, for fresh toilet flushing.

Module frame:

- self-supporting, powder-coated
- Depth-adjustable retainer for upper glass facing with actuation unit and lower glass facing with toilet unit
- Two adjustable foot supports for floor projections of 0-200 mm
- Two M 12 retaining bolts and nuts
- Retainer for toilet ceramics with spacing of 180 mm
- Toilet drain bend DN 90 with transition piece DN 90/100, material PP
- Transition piece also suitable for horizontal installation
- DN 90 toilet connection set, including protective plug
- Large bare-wall protection
- Suitable for wall structures up to 45 mm

Please order separately:

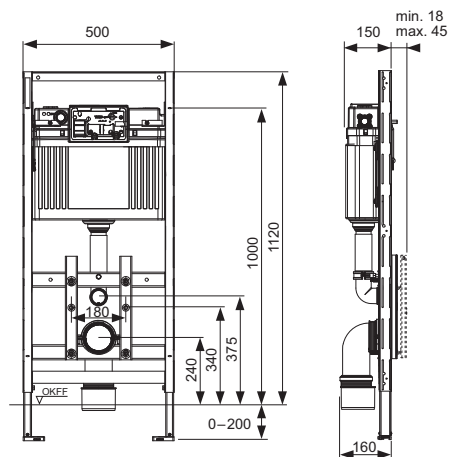
- Upper glass facing with actuation unit
- Lower glass facing with toilet attachment
- Fitting for individual pre-wall, corner or wooden stud structures

Optional accessories:

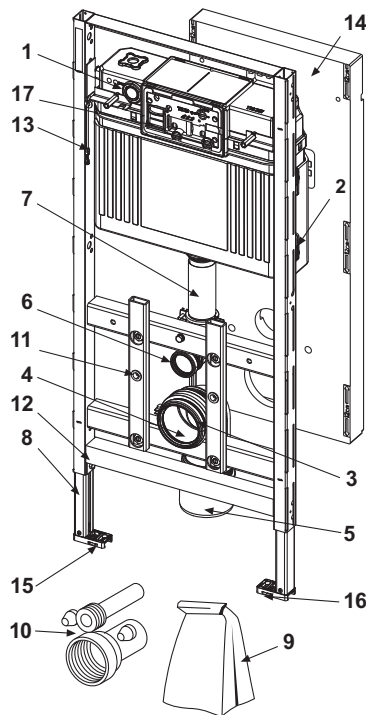
TECElux "ceramic-Air" odour extraction upgrade set (9660000), only in conjunction with the sen-Touch upper glass facing with actuation unit.

Sales data:

Product name: TECElux toilet module 100, installation height 1120 mm
Commodity group: 920
Product group: 2009200010



Spare parts:



- | | | |
|----|---------|--|
| 1 | 9820575 | Uni cistern for TECElux modules |
| 2 | 9820040 | Assembly kit for Uni cistern |
| 3 | 9820134 | Toilet drain bend DN 90 (PP) |
| 4 | 9820139 | Seal for drain bend DN 90 |
| 5 | 9820136 | Adapter DN 90/DN 100 (PP) |
| 6 | 9820015 | Flush pipe seal |
| 7 | 9820011 | Flush pipe with O-ring, length 269 mm, dry-wall construction |
| 8 | 9820335 | C-section for module foot |
| 9 | 9820043 | By-pack for toilet module |
| 10 | 9820057 | Connection set DN 90 for toilet |
| 11 | 9820071 | Clinch nut |
| 12 | 9820447 | Foot brake with steel spring |
| 13 | 9820329 | Securing cable |
| 14 | 9820330 | Bare-wall protection |
| 15 | 9820332 | Module foot with toggle left |
| 16 | 9820333 | Module foot with toggle right |
| 17 | 9240950 | Insert chute for cleaning tablets |
| | 9240951 | Insert chute II for cleaning tablets |