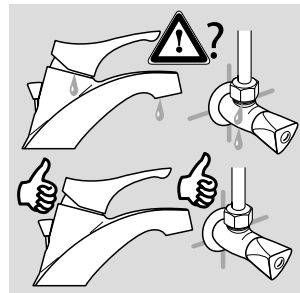
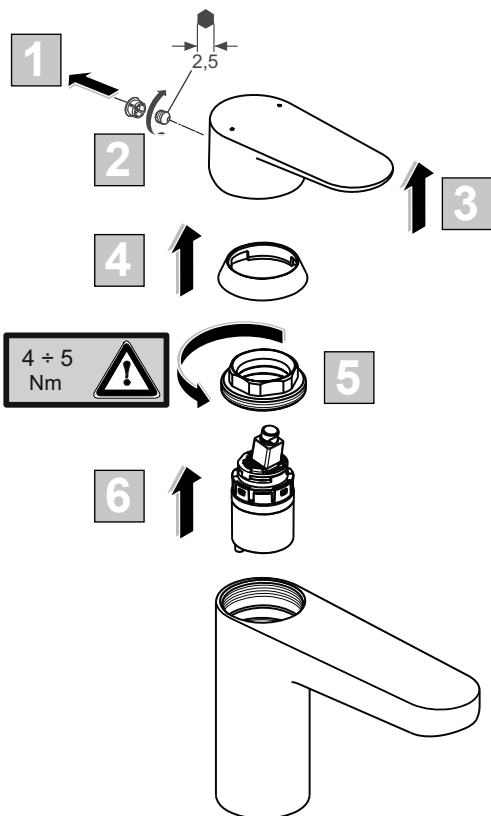
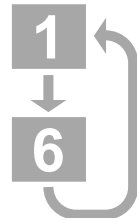
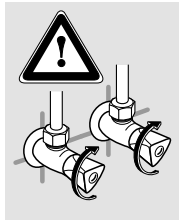
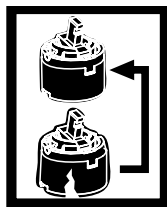
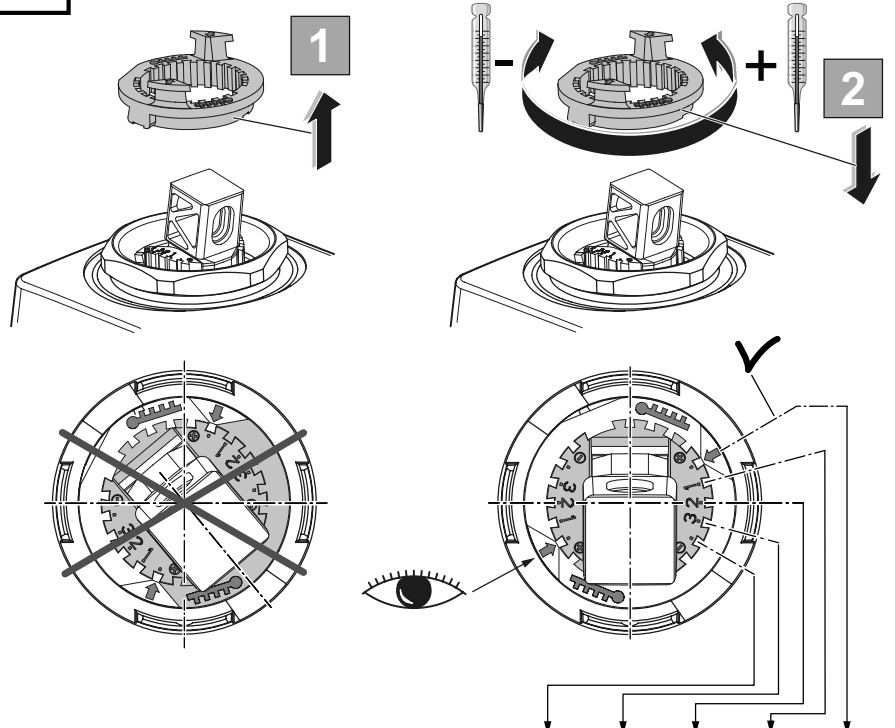
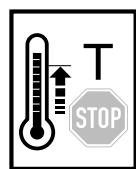
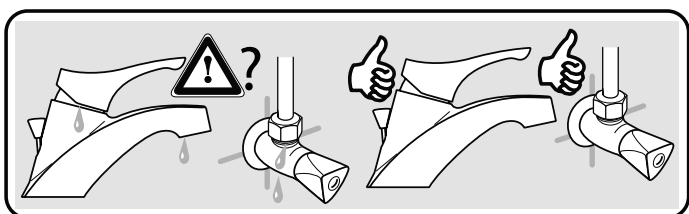
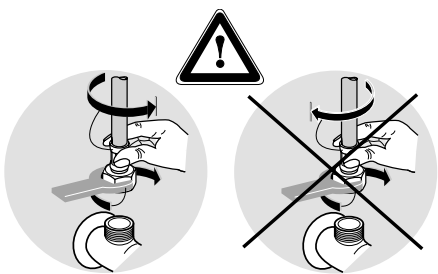
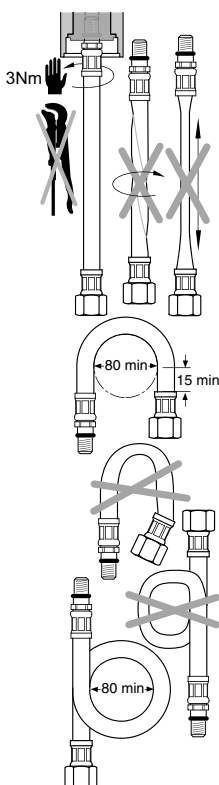
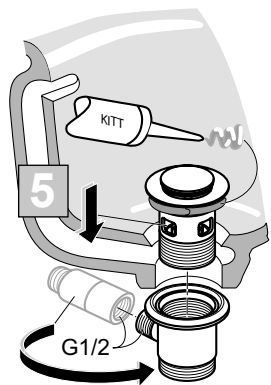
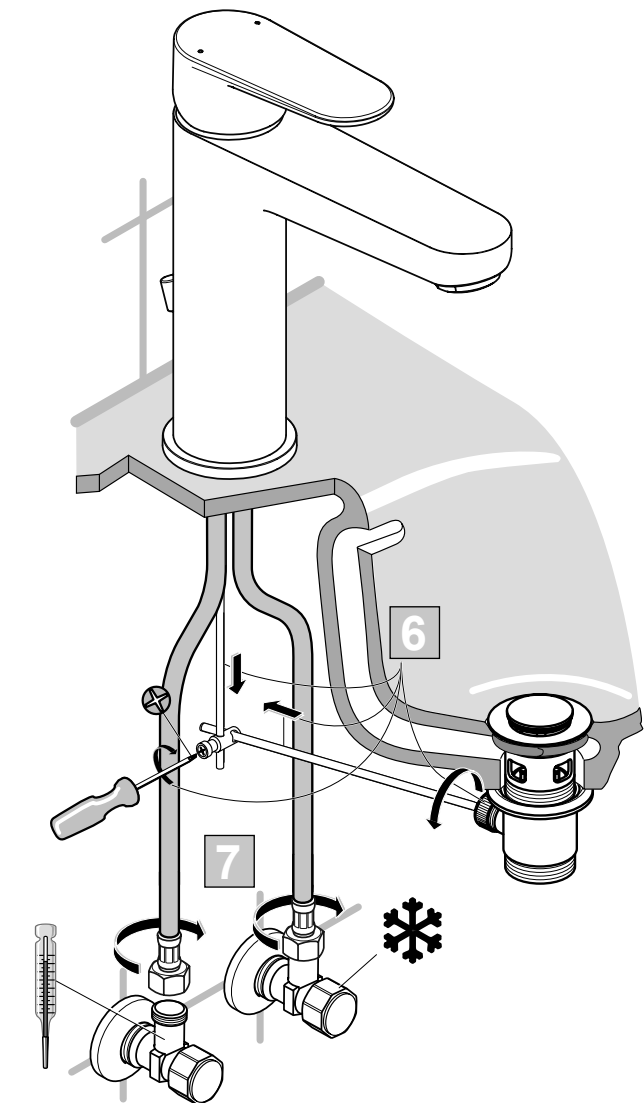
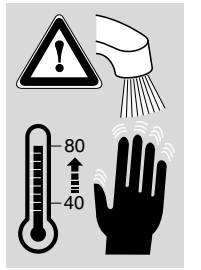
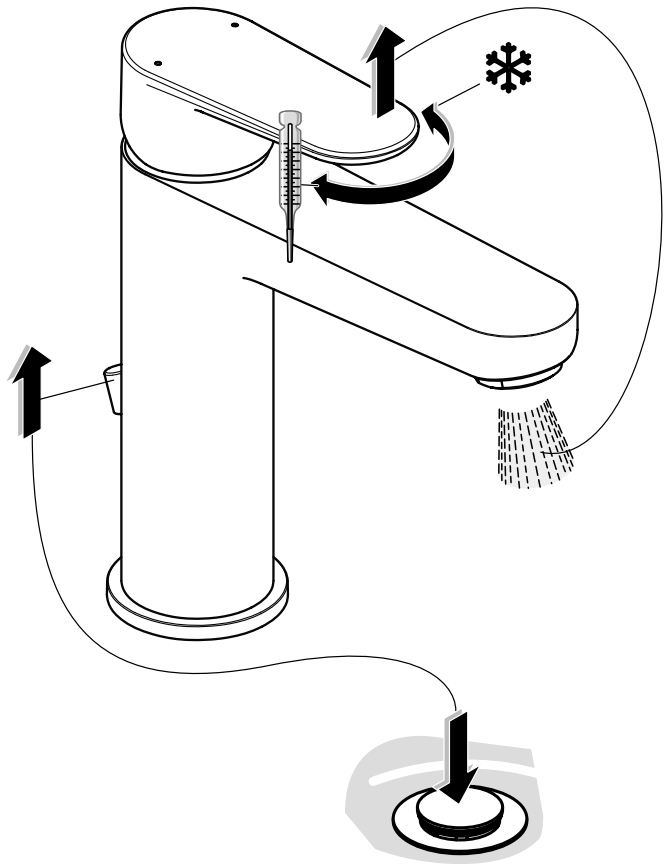
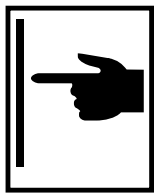
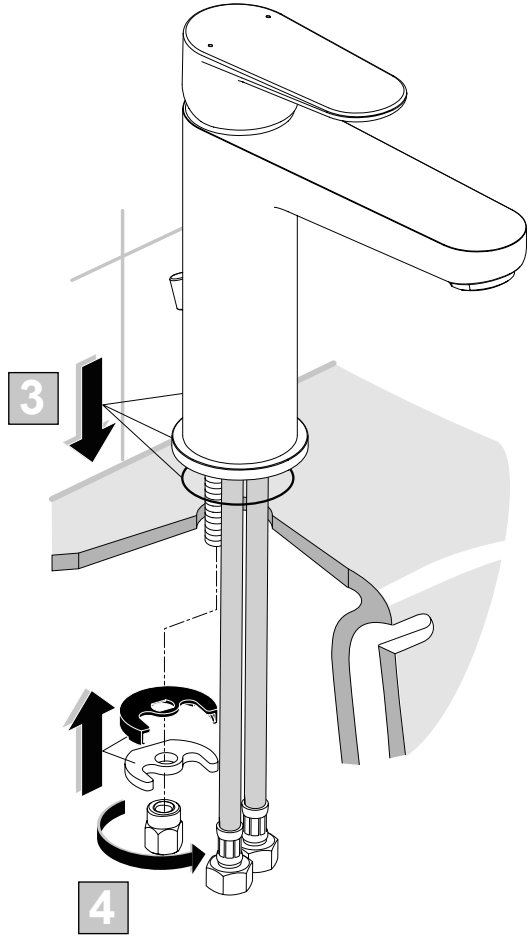
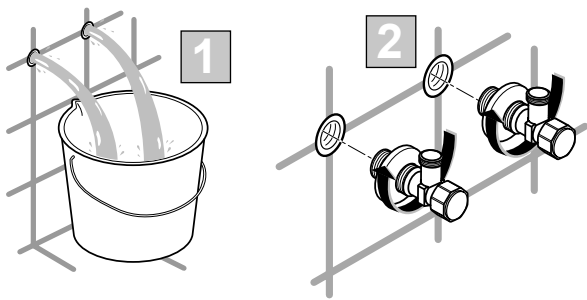


Ordering spares / Ersatzteil - Regelung / Pièces de rechange / Parti di ricambio / Lista de recambios / Onderdelen bestellen (NL/B) / Κωδικοί Ανταλλακτικών / Bestilling af reservedele / Beställning av reservdelar / Bestilling av reservedeler / Резервни части / Запчасти / Części zapasowe / Pieśe de schimb / Rendelhető alkatrészek / Запасні частини / Резервни делови / Резервни делови / Atsarginių dalių / Tellitavad varuosad / Rezerves daļas / Náhradní díly / Náhradné diely / Yedek parça siparişi / Nadomestni deli



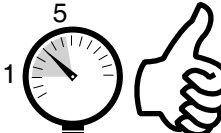

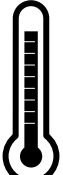
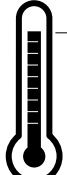
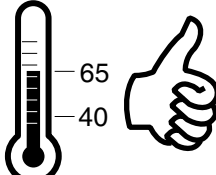

XX = AA, AD,

- | | |
|-------------------|-------------------|
| 1 - B 961644 XX | 11 - B 960712 XX |
| 3 - B 964696 NU | 12 - B 964702 NU |
| 4 - A 861080 XX | 13 - B 964550 AA |
| 5 - B 961645 NU | 13a - A 962991 AA |
| 6 - A 861397 NU | 14 - A 962005 NU |
| 10 - B 961383 XX | 15 - B 961384 XX |
| 10a - B 960754 XX | 17 - A 960063 XX |
- (BC705..)





P	50°C	15°C	4	3	2	1	0
			°C	°C	°C	°C	°C
0,3 MPa 3 bar	50°C	15°C	27	33	41	48	50
	65°C	15°C	33	42	53	63	65
	85°C	15°C	41	53	68	83	85

 P	bar	 MAX. 10 0,5	 5 1	 Q (3 bar)
 T	°C	 MAX. 80	 65 40	 I/min
				5