



- Wall mounted
- Single lever
- Chrome
- Double water inlet
- Plastic cartridge with heat and flow limiter

Technical properties

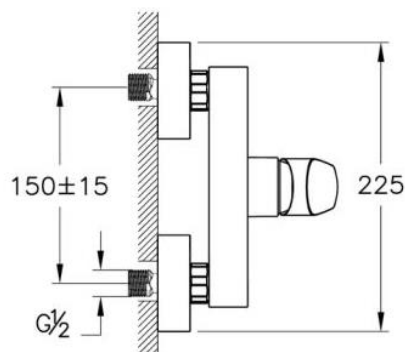
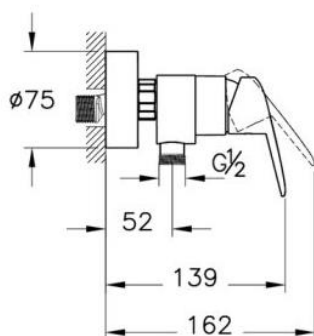
Hot water supply	Max: 80 °C (Recommended: 5-65 °C)
Working pressure	0,5-10 Bar (Recommended: 1-5 Bar)
Connection size	G 1/2"
Body material	Brass

Certificates

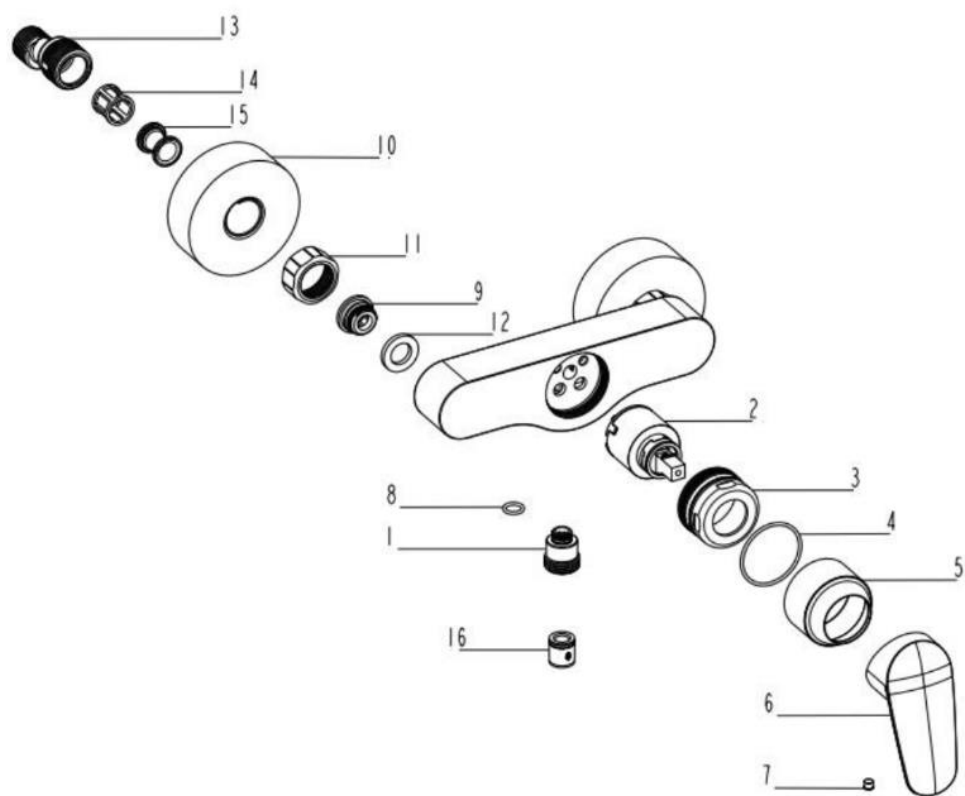
DWGV conformity

Regulations

EN standard	EN 817
-------------	---------------



Spare Part List – A43080EXP



NO	CODE	DESCRIPTION	QUANTITY
1	A2869201YP	NIPPLE	1
2	A28503YP	Ø35 CARTRIDGE	1
3	A2495753YP	ADAPTER	1
4	A20637YP	O-RING	1
5	A2495601YP	OUTER HOLLOW BODY	1
6	A3352901VD000RBYP	HANDLE	1
7	A20697YP	HOLE CAP	1
8	A20618YP	O-RING	1
9	A31027YP	NIPPLE	2
10	A2435501YP	ESCUTCHEON	2
11	A2086801YP	UNION NUT	2
12	A20449YP	SEALING	2
13	A2364202YP	ECCENTRIC FITTING	2
14	A23702YP	SILENCER OUTER	2
15	A25652YP	SILENCER INNER	2
16	A31032YP	CHECK VALF	1