



- Wall mounted
- Single lever
- Chrome
- Double water inlet
- Plastic cartridge with heat and flow limiter

### Technical Data

#### Technical properties

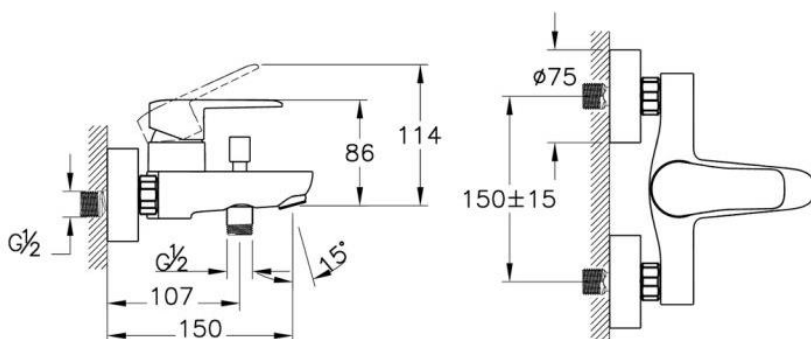
Hot water supply	<b>Max: 80 °C (Recommended: 5-65 °C)</b>
Working pressure	<b>0,5-10 Bar (Recommended: 1-5 Bar)</b>
Connection size	<b>G 1/2"</b>
Body material	<b>Brass</b>

#### Certificates

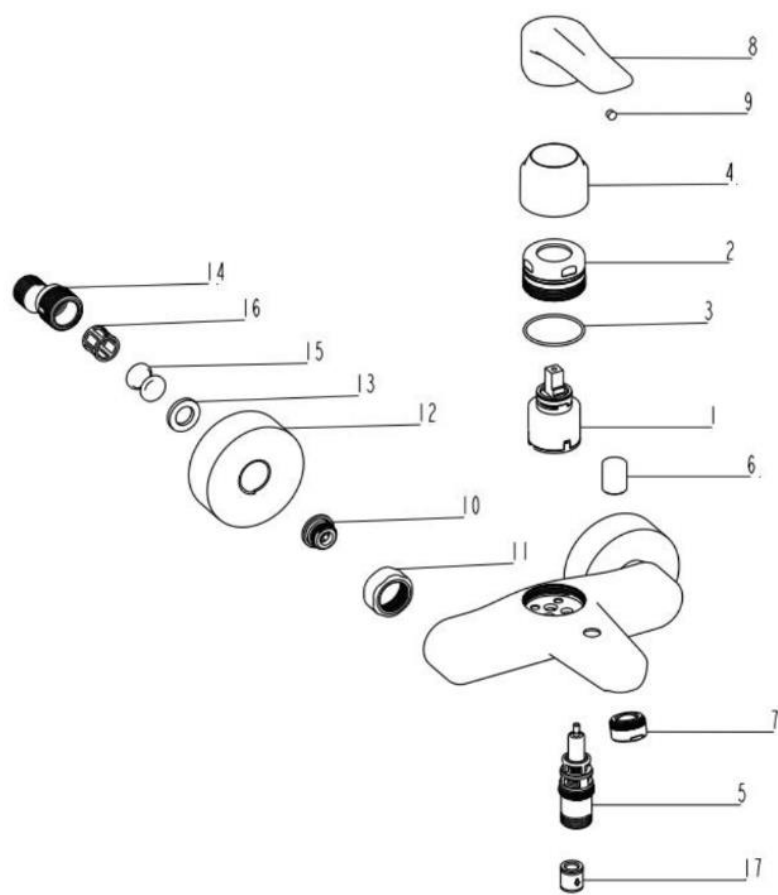
DWGV conformity

#### Regulations

EN standard **EN 817**



Spare Part List – A43058EXP



NO	CODE	DESCRIPTION	QUANTITY
1	A28503YP	Ø35 CARTRIDGE	1
2	A2495753YP	ADAPTER	1
3	A20637YP	O-RING	1
4	A2495601YP	OUTER HOLLOW BODY	1
5	A3254701YP	DIVERTER	1
6	A2427601YP	LEVER	1
7	A3194901YP	M24X1 AERATOR	1
8	A3376201VD000RBYP	HANDLE	1
9	A20697YP	HOLE CAP	1
10	A31027YP	NIPPEL	2
11	A2086801YP	UNION NUT	2
12	A2435501YP	ESCUTCHEON	2
13	A20449YP	SEALING	2
14	A2364202YP	ECCENTRIC FITTING	2
15	A25652YP	SILENCER INNER	2
16	A23702YP	SILENCER OUTER	2
17	A31032YP	CHECK VALF	1