



- Deck mounted
- Single lever
- Chrome
- Double water inlet
- Plastic cartridge with heat and flow limiter
- Flexible hose with stainless steel braiding

Technical properties

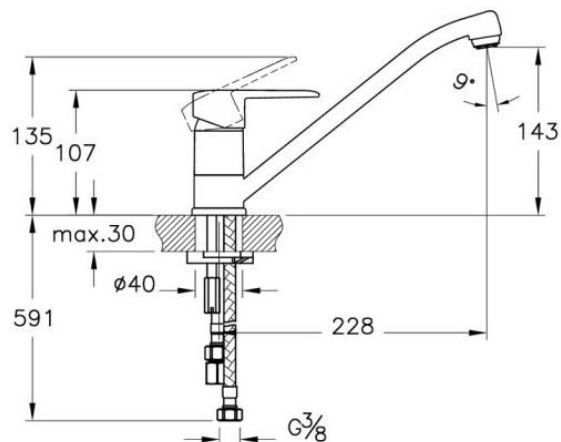
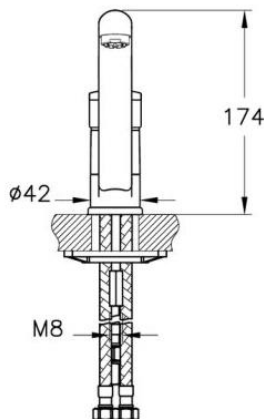
Hot water supply	Max: 80 °C (Recommended: 5-65 °C)
Working pressure	0,1-0,4 Bar
Connection size	G 3/8"
Body material	Brass
Projection	228 mm
Spout height	143 mm

Certificates

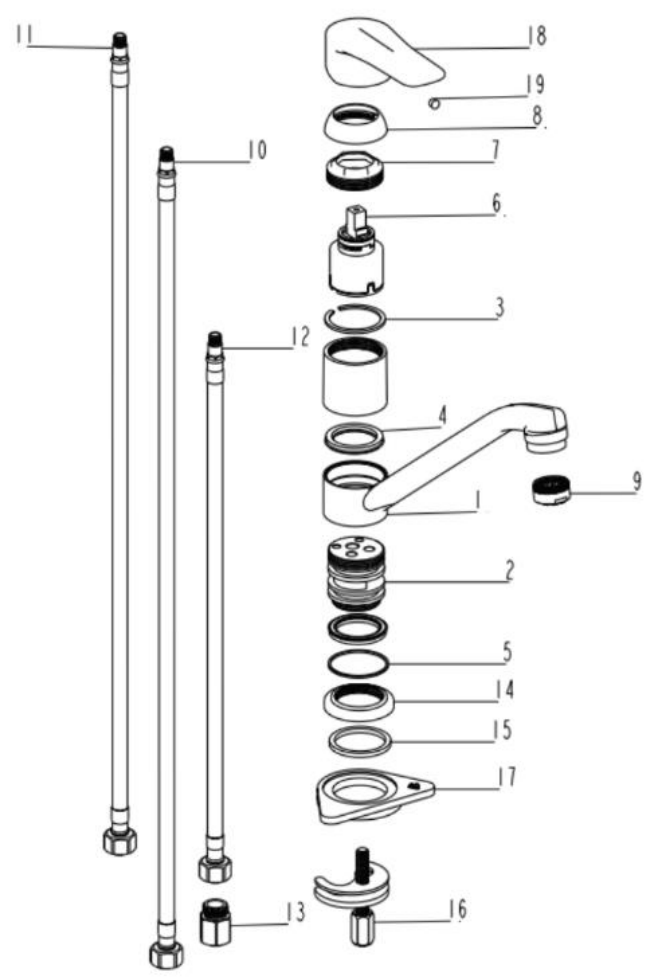
DWGV conformity

Regulations

EN standard **EN 817**



Spare Part List – A43432EXP



NO	CODE	DESCRIPTION	QUANTITY
1	A33554YP	SINK SWIVEL	1
2	A2188340YP	INNER BODY	1
3	A28103YP	SINK BEARING	1
4	A22356YP	NUTRING	2
5	A21866YP	SINK BEARING	1
6	A25334YP	Ø35 CARTRIDGE	1
7	A2461740YP	RETAINING NUT	1
8	A2461601YP	CARTRIDGE COVER	1
9	A3124101YP	M24X1 AERATOR	1
10	A3237498YP	M8 3/8" FLEXIBLE HOSE	1
11	A3237496YP	M8 3/8" FLEXIBLE HOSE	1
12	A3237396YP	M8 3/8" FLEXIBLE HOSE	1
13	A3190401YP	FLOW REGLUATOR	1
14	A2187301YP	ESCUTCHEON	1
15	A21851YP	SEALING	1
16	A33720YP	FASTENING PLATE	1
17	A21621YP	FASTENING SEAL	1
18	A3376201VD000RBYP	HANDLE	1
19	A20697YP	HOLE CAP	1